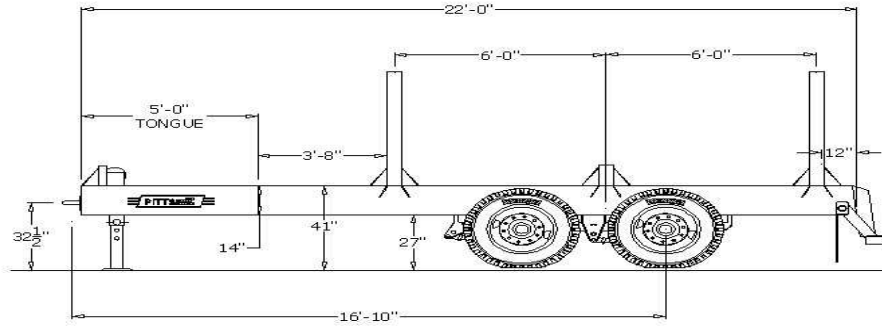




PH. 800-321-8073

FX. 334-855-3507



MODEL: PT22

## Model PT22

[www.pittrailers.com](http://www.pittrailers.com)

### STANDARD FEATURES

Load Capacity _____	55,000 lbs.
Weight _____	6,975 lbs.
Overall Length _____	22'
Width _____	8' 6"
Mainframe _____	14" Wide Flange "I" Beams
Cross Members _____	Channel Iron
Draw Bar _____	G.T.W. 60,000 lbs., 3" Eye, 4 Position
Tongue _____	Continuation of Mainframe
Safety Chain _____	"1/2" High Test
Bumper _____	Extended Push Bumper, 4"x 6"x 102"
Bolsters _____	4"x 10"x 96", High Yield Steel
Standards _____	5"x 5" x 96", High Yield Steel
Landing Gear _____	12,000 lbs. Capacity, One Speed, Drop-Leg
Tandem _____	Entire Length of Tandem Covered With Channel Iron
Winches _____	W/ Two 30' Straps
Suspension _____	Hutch 3 Point, Four Spring w/ 14,000lbs Cap. Springs
Axles _____	25,000 lbs. cap. 77.5" Track, Auto Slack Adjusters, Type 30 Brake Chambers, 16 1/2"x 7"x 3/4" Brake Pads Air Activated, Outboard Drums, ABS Anti-lock Brake System
Tires _____	11R22.5 Radials
Wheels _____	10 Hole Disc, Hub Piloted
Wiring _____	D.O.T. Sealed Wiring Harness, Sealed Lights Rubber Mounted
Paint _____	Black (Two Part Primer w/ Two Part Polyurethane Paint)

\*\*\*NOTE\*\*\*ALL SPECIFICATIONS SUBJECT TO CHANGE WITHOUT NOTICE. WEIGHTS AND DIMENSIONS ARE APPROXIMATE

### OPTIONAL EQUIPMENT

#### BOGIE

Type 30/30 Spring Brakes _____	add 40 lbs.
Single Point (2 Spring) _____	add 665 lbs.
Air Ride (Watson Integra) _____	add 175 lbs.
Air Lift One Axle _____	add 135 lbs.
Pitts Lift Kit - Air Lift 1 Axle on a Single Point Suspension _____	add 95 lbs.
Add a Third Axle (spring ride) _____	add 1,800 lbs.
Add a Third Axle (air ride) _____	add 1,885 lbs.
11R.24.5 Tires _____	deduct 88 lbs.
425/60R22.5 Super Singles on Aluminum Disc Wheels _____	deduct 595 lbs.
Aluminum Wheels (outside polished) _____	deduct 280 lbs.
Onboard Electronic Scales (trailer only) (Vulcan or SI) _____	add 55 lbs.
Truck Only (not installed) _____	
Auto I.D. transmitter for multiple trucks, trailers _____	
Onboard Air Scales (trailer only) _____	add 30 lbs.
Air Gauge In Sealed Box _____	

#### MISCELLANEOUS

- |   |  |
|---|--|
| ○ Additional Length add 60 lbs.           | ○ Additional Bolsters add 450 lbs.                 |
| ○ Additional Winches (cable or straps)    | ○ 8' Wide Trailer                                  |
| ○ Grapple Bar off Rear Bumper add 85 lbs. | ○ Removable Standards                              |
|   | ○ Additional Lights                                |
| ○ Moveable Bolsters add 50 lbs.           | ○ Special Paint Color (Any Color Other Than Black) |